

Elaborato/Documento:

PARTICOLARI COSTRUTTIVI
STRUTTURE FONDAZIONE

Geom. Sauro CEROFOLINI
(progettazione generale)

Arch. Elisa DI TRAPANI
(progettazione generale)

Per. Ind. Stefano CARRAI
(progettazione impianti)

CUP: B18C18000100004

Data: Protocollo/fascicolo:
novembre 2018:163986/L.01.08/2018

Responsabile Unico del Procedimento:

Geom. Luca Marchi

Via Tagliamento, 3 – 52100 Arezzo – Tel.: 0575 377 302 – Fax: 0575 377 395 – www.comune.aretzo.it –
e_mail: l.marchi@comune.aretzo.it

<p>CARICHI SOLAI</p> <p>SOLAIO P.T. DI TIPO PREDALLES. H=16+4 CM.</p> <p>CARICHI PORTATI NON STRUTTURALI: 200 KG/MQ</p> <p>CARICHI VARIABILI: 300 KG/MQ</p>
--

The floor plan shows a building with a complex layout. The overall dimensions are 13,00 m in width and 11,78 m in depth. The plan is divided into several rooms and corridors. The rooms are labeled with numbers 1 through 11. The corridors are labeled with letters A and B. The plan includes a compass rose indicating North (N), South (S), East (E), and West (W). The plan also includes a scale bar and a north arrow.

Dimensions and annotations:

- Overall width: 13,00 m
- Overall depth: 11,78 m
- Room 1: 4,40 m x 3,63 m
- Room 2: 5,30 m x 3,63 m
- Room 3: 2,50 m x 3,63 m
- Room 4: 4,40 m x 3,63 m
- Room 5: 4,40 m x 3,63 m
- Room 6: 5,30 m x 3,63 m
- Room 7: 2,50 m x 3,63 m
- Room 8: 4,40 m x 3,63 m
- Room 9: 4,40 m x 3,63 m
- Room 10: 5,30 m x 3,63 m
- Room 11: 2,50 m x 3,63 m
- Corridor A: 4,40 m x 3,63 m
- Corridor B: 5,30 m x 3,63 m
- Perimeter magrone sp. 10 cm
- Perimeter travi di fondazioni, sez. rettangolare
- Perimeter travi-pareti sp. 25 h= 210 cm.

[illegible]

VOLUME PREFABBRICATO DA DEFINIRE

PROFILO TERRENO ATTUALE

PROFILO SCAVO A SEZIONE OBBLIGATA

1.30

0.85

+0.00

+0.15

-1.30

-1.15

1

2

3

4

5

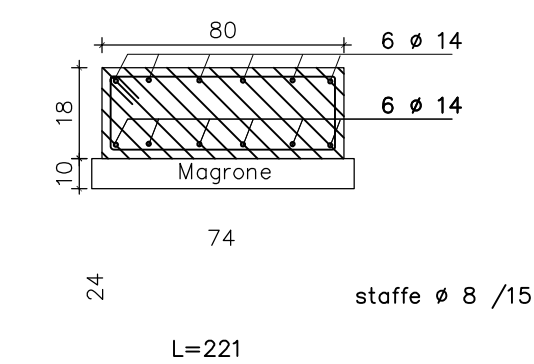
6

1 TRAVE PARETE SP. 25 CM, H 85 CM.

2 TRAVE DI FONDAZIONE H 30 CM.

3 MAGRONE 10 CM.

Sez. TIPO travi 401–410



16 16

eventuale armatura per marciapiede

cordolo 2+2 Ø 14

armatura orizzontale Ø 10/20

legature Ø 6 n. 9/mq.

105

-1.00

SOLAIO PREDALLES- H 16 +4 CM.

Ø10/20 131 130 Ø10/20

20 20

25

Nelle travi pareti dovranno essere predisposte delle aperture, in misura minima per accedere al vuoto tecnico.

Technical drawing of a cross-section of a reinforced concrete slab. The drawing shows a slab with a width of 80 cm and a height of 20 cm. The reinforcement consists of 2 bars of diameter 14 mm (2φ14). The top reinforcement is at a distance of 20 mm from the top surface. The bottom reinforcement is at a distance of 20 mm from the bottom surface. The drawing is labeled "SEZIONE 1-1".